



CAPCON OAL

Elbow Service Branch

CTG16 thread type joined!

NEW



OAL-16



OAL-22



*When using with a liquidtight cable gland.

RoHS2



Examples of use

Makes wiring smart when routed at a right angle!

Applicable to variety of wiring patterns in combination with cable glands

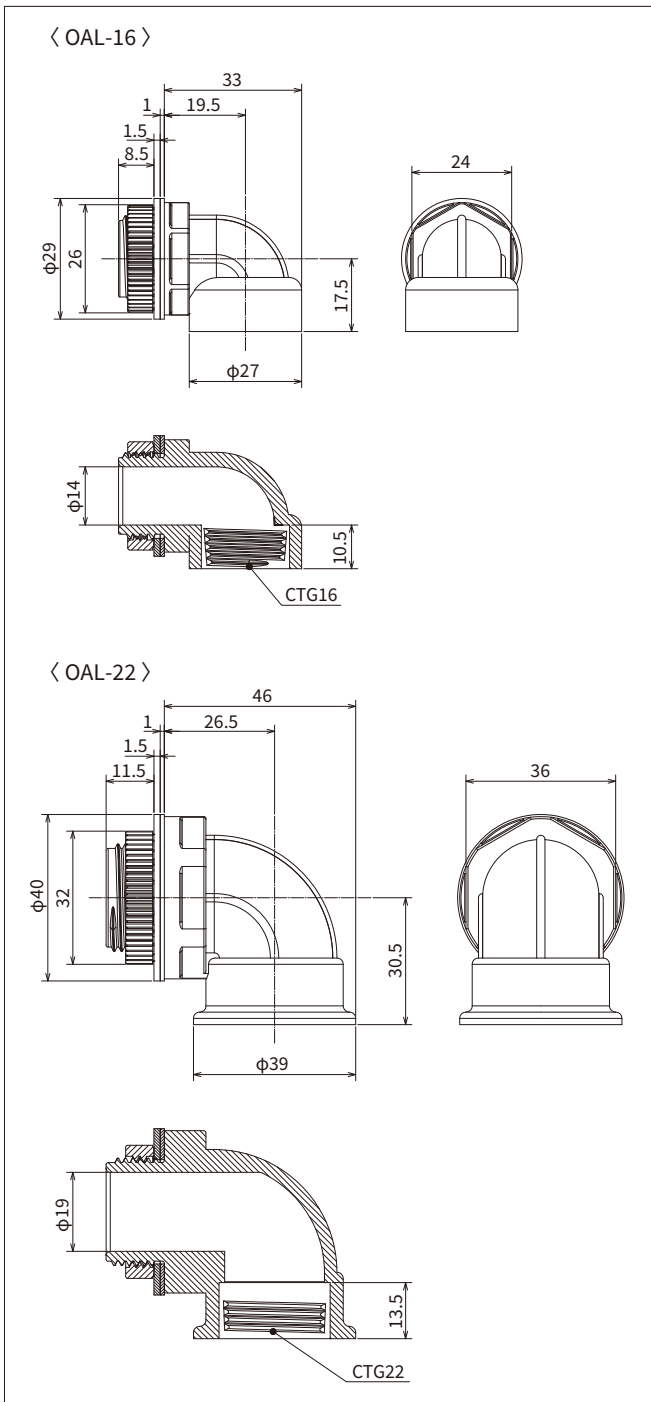


OHM ELECTRIC CO., LTD.

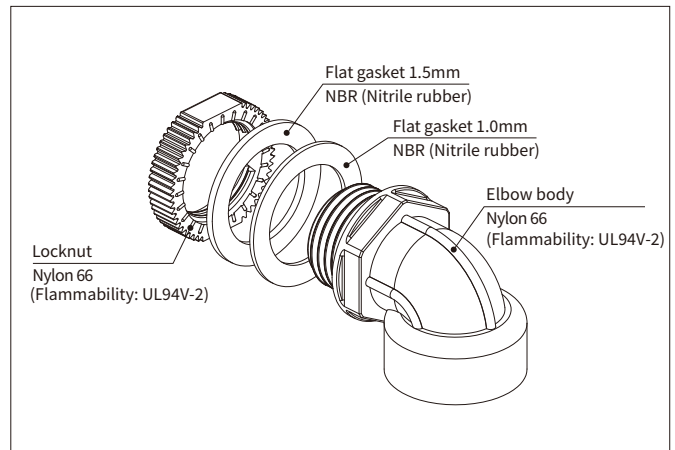
Model/Specifications

Model	Entry hole dia. (mm)	Thread	Max. plate thickness	Working temp.	Weight	Q'ty/pack
OAL-16	φ21	CTG16	4mm	-25 to +80°C	13g	20 pcs.
OAL-22 NEW	φ28	CTG22	6mm		33g	10 pcs.

Dimensional drawing



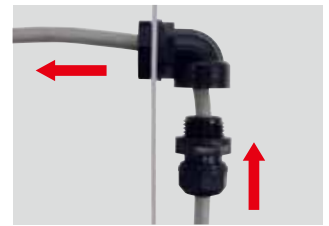
Materials



Instructions



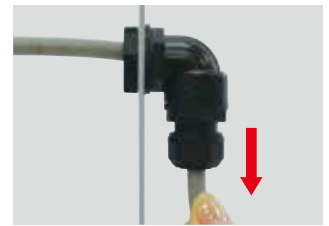
01 Attach a cable gland CAPCON.
*Use the 1.0mm flat gasket only when fixed with the locknut.



02 Insert the cable.



03 Screw the CAPCON. Then tighten the Dome nut of the CAPCON to fix.



04 Make sure that the cable is properly secured.



For threaded holes on Limit Switches etc.
Remove the locknut and screwする。

Orientation

Supply includes 2 packings of 1.0 mm and 1.5 mm thickness.
Use either one or both as required for orientation.

OHM ELECTRIC CO., LTD.

7000-21, Nakagawa, Hosoe, Hamana-ku, Hamamatsu, Shizuoka 431-1304, Japan
TEL +81-53-522-5562 FAX +81-53-523-2362 e-mail : info@ohm.co.jp
URL : <https://www.ohm.jp/>

The contents of this catalog are subject to change for product improvement.
Colors of products may slightly differ from actual due to printing.